

FORD BRONCO



FORD BRONCO FOR 1988



Best-built American trucks seven years running. For the past seven consecutive years, Ford quality has led all other American automotive companies. That's based on an average of owner-reported problems in a series of surveys of '81-'87 models designed and built in North America. It's the result of our firm commitment to the integrity of the vehicles we produce.

Over the past several years, that priority has led us to new state-of-the-art product developments, tooling and manufacturing procedures. Most importantly, we've formed a stronger partnership with our people — production workers and management — everyone pulling together with the goal of producing the right cars and trucks for your needs today.

It's not surprising then that Ford Bronco is America's best-selling full-size utility truck — based on cumulative calendar year retail deliveries for the last 10 years. That's an impressive claim. But then the Ford Bronco is an impressive truck — so impressive that we've backed it with a 6-year/60,000-mile powertrain warranty.



*Eddie Bauer Bronco in Alpine Green Metallic/
Light Chestnut.*



Notable standard and optional features include:

□ Three trim levels — headed by the Eddie Bauer for top-of-the-line sporting luxury □ Across the board multiple-port, electronically fuel injected (EFI) gasoline engines, including: □ Standard 4.9 liter EFI 6-cylinder power □ Optional 5.0 liter EFI V-8 — the most powerful small V-8 in its class □ Optional 5.8 liter EFI V-8, new for 1988 □ Standard 5-speed manual overdrive fully synchronized transmissions, with optional 5-speed manual creeper first gear and 3-speed automatic or 4-speed automatic overdrive transmissions □ Standard rear anti-lock braking □ Touch-Drive option for shifting “on the fly” from 2-wheel drive high to 4-wheel drive high and back again at the touch of a button □ Snow plow capability (see your Ford Dealer for recommended equipment)

However you intend to use your truck — on fishing trips, hauling loads, or even to the Club on a Saturday night — Ford Bronco is there to do the job. It's truly a truck for all reasons. Climb behind the wheel of a Bronco. Discover for yourself what America's been discovering for the last decade — that when it comes to filling your trucking needs, the leading name in town is Ford.

Contents

Eddie Bauer	4-5
XLT	6
Custom	7
Engineering	8
Specifications	9
Preferred Equipment Packages	10-11
Options and Colors	12-13
Safety and Owner Benefits	14-15

Some equipment shown on these pages may be optional. See options list on page 13.

THE INSIDE STORY

Get the inside story on Ford Bronco. Examine the interior. The clean lines. The layout of instruments, controls and gauges. Bronco's interior is driver friendly. It's designed with you in mind.

You can see the difference

Get behind the wheel of a Bronco. Notice how easily you can view the entire speedometer through the steering wheel. A minor point, perhaps, but an important one. It's a measure of the detailed thought that has gone into the design of the instrument panel.

Notice how easily you can locate and reach all the controls. Check out the voltmeter and full complement of gauges: fuel, oil pressure and engine coolant temperature, plus a back-up alert light system. All standard and all indicative of the kinds of features associated with Ford quality.

Eddie Bauer standard luxury

With the Eddie Bauer Bronco, you don't have to opt for luxury interior "extras." They come with the truck: privacy glass™; air conditioning; light group; color-keyed carpet; color-keyed door trim panel with cloth insert and map pocket; color-keyed cloth front headliner; rear cargo light; reclining Captain's Chairs, cloth trimmed with dual armrests; floor console; additional insulation; electronic AM/FM stereo with digital clock; speed control/tilt steering wheel. And more.



Eddie Bauer instrument panel.



Eddie Bauer rear seat in Chestnut.



Bronco cargo area in Chestnut. Rear seat can be folded down for added storage space.

Right: Eddie Bauer interior and Captain's Chairs in Chestnut.

Some equipment shown on these pages may be optional. See options list on page 13.

FORD



FORD BRONCO XLT

Take the Bronco XLT anywhere. A weekend fishing trip. Or Saturday night to the Club. The Bronco XLT is a premium blend of style and toughness. In a Bronco XLT you'll never feel out of place.

On the outside, the Bronco XLT features: tinted glass; chrome grille; chrome front bumper with black rub strip; bright windshield moldings; lower bodyside protection moldings; bright wheelip moldings; swing-down tailgate with power window; brushed aluminum tailgate applique; impact-resistant aero-halogen headlights with bright surround; wraparound taillights with high-impact lenses; and sport wheel covers.

Notable interior comforts include:

electronic AM/FM stereo radio with digital clock; color-keyed cloth bucket seats; color-keyed carpet; floor console; color-keyed front headliner; color-keyed door trim panels with cloth insert and map pocket; rear cargo light; color-keyed safety belts; dome light with courtesy switches; speed control/tilt, leather-wrapped steering wheel; ammeter, oil pressure gauge plus temperature alert light; and woodtone instrument panel applique.

There's a lot more to the XLT. For the full story see the Trim Chart on page 9.

Right: Bronco XLT interior in Medium Grey.

*Below: Bronco XLT in Dark Grey Metallic/
Medium Silver Metallic.*



FORD BRONCO CUSTOM

Bronco's 4-wheel drive gives you the versatility you need for those demanding off-road conditions. Power steering and power front disc/rear drum brakes are standard, along with rear anti-lock brakes. And tough, Twin-Traction Beam independent front suspension contributes to a remarkably smooth ride.

A big 32-gallon fuel tank coupled with the efficiency of the fuel-injected 4.9L I-6 engine plus the standard, new 5-speed manual overdrive transmission gives you long range cruising capability.

Inside, Bronco Custom features: electronic AM radio with digital clock (may be deleted for credit); color-keyed, vinyl bucket seats; rear flip-fold bench seat; color-keyed, vinyl door trim panels; color-

keyed lap/shoulder belts with comfort regulator; and vent windows.

Standard Custom exterior items include: chrome front bumper; chrome rear step bumper with rub strip; tinted glass; interval windshield wipers; chrome grille; aero halogen headlamps with high impact polycarbonate lenses; swing-down tailgate with power window; and sport wheel covers.

Right: Custom Bronco interior in Chestnut.

Below: Custom Bronco in Desert Tan Metallic.

Some equipment shown on these pages may be optional. See options list on page 13.



THE ENGINEERING BEHIND AMERICA'S BEST-SELLING FULL-SIZE UTILITY TRUCK

Test drive a 1988 Ford Bronco. The inside says comfort. Yet there's plenty of response under the hood. Put the Bronco through its paces. Experience the fun of driving a multiple-port, electronically fuel injected engine coupled with either a 5-speed fully synchronized manual overdrive or automatic transmission.

Multiple-port EFI power

Electronic fuel injection (EFI) results in improved horsepower and torque over carbureted engines. Individual injectors at each cylinder intake valve provide precise fuel metering. The result — improved overall operation, smooth running and effective starting in temperature extremes.

Three tough power plants

Bronco offers a choice of three tough power plants — all of them engineered to meet your performance needs.

Bronco is the only full-size utility to offer a big 6-cylinder engine. The 4.9L I-6, designed for excellent low-end torque plus good fuel economy, is the standard offering in the XLT and Custom.

The advanced 5.0L V-8, standard in Eddie Bauer and optional in the Bronco XLT and Custom, is the most powerful small V-8 in its class. When properly equipped, it lets you tow trailers weighing up to 7,700 pounds.

For 1988, multiple-port EFI has also been added to the 5.8L V-8. A rated trailer towing capacity of 7,100 pounds is featured with the 5.8L when properly equipped.

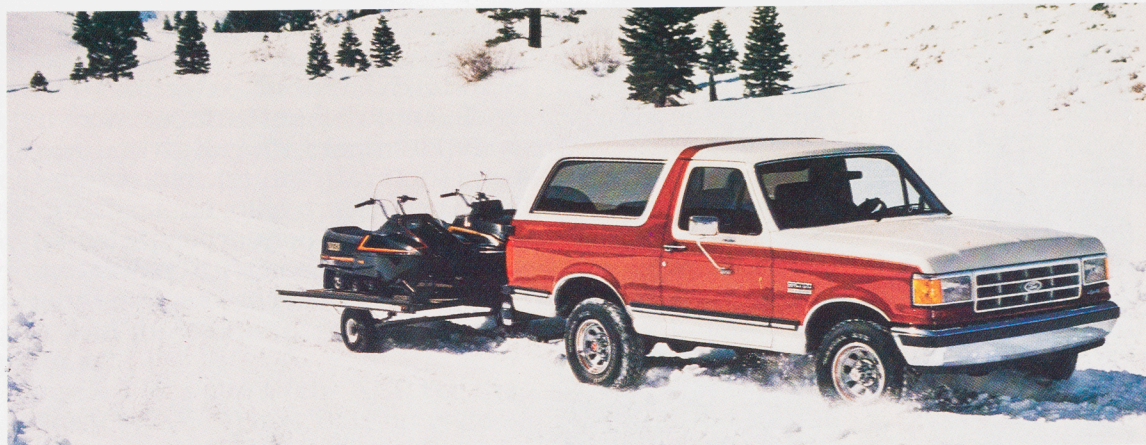
5-speed manual synchronized transmissions — another Bronco standard feature

All '88 Ford Bronco manual transmissions are of the 5-speed, fully synchronized (including first and reverse) overdrive type (M5OD). The benefit to you — improved performance and good fuel economy.

Options include a 5-speed manual with a creeper 5.72 first gear ratio (M5OD-HD); a 3-speed automatic; and a 4-speed automatic overdrive.

Rear anti-lock braking system

Bronco's electronically controlled rear anti-lock braking system is designed to



Bronco XLT with optional Trailer Towing Package.

inhibit complete rear wheel lock-up under most operating conditions (operable in 2WD mode only).

Anytime rear wheel lock-up is detected, the computer directs the pressure control valve to modulate rear brake line hydraulic pressure. The result is more controlled rear braking performance. Each time the ignition is turned on, a warning light check and a complete computer self-check are made. In the event of system failure, the instrument panel warning light will indicate that the computer has shut down the system and converted the rear brakes to conventional operation.

Manual locking, free-running front hubs and 2-speed transfer case

Bronco's standard manual locking front hubs are the free-running type. This means that in the 2-wheel drive mode with the hubs unlocked, the front axles and driveshaft remain relatively motionless, reducing friction and wear. The proven chain-driven 2-speed transfer case is the heart of Bronco's drive system.

4-wheel drive at the touch of a button

With the Touch-Drive option you can shift "on the fly" from 2-wheel drive high to 4-wheel drive high and back again at the touch of a button — at any speed. Touch-Drive is available with the 5.0L engine in combina-

tion with automatic overdrive transmission. Automatic locking hubs are included with Touch-Drive, but are also offered with all other powerteams.



Twin-traction beam independent front suspension

This tough performer combines heavy duty off-road ruggedness with power to the front wheels and an independent design that lets each front wheel step over bumps individually for a smoother ride. Other important features include lubed-for-life ball joints.

Gas mileage

1988 EPA mileage estimates were not available at the time this catalog was approved for printing. As soon as EPA figures are released, your Ford Dealer will be happy to pass them along to you.

TRIM CONTENT

■ = Optional ● = Standard			
	Custom	XLT	Eddie Bauer
EXTERIOR			
Chrome front bumper	●	●	●
Front bumper rub strip	●	●	●
Chrome rear step bumper with rub strip	●	●	●
Chrome grille	●	●	●
Aero-style halogen headlights (with impact-resistant lenses)	●	●	●
Wraparound front parking/turn signal lights (with impact-resistant lenses)	●	●	●
Bright surround (front lights)	●	●	●
Wraparound taillights (with impact-resistant lenses)	●	●	●
Bright low mount swingaway mirrors	●	●	●
Bright windshield molding	●	●	●
Tinted glass, complete	●	●	●
Removable rear fiberglass roof	●	●	●
Privacy™ glass (quarter windows)	■	■	●
Bright quarter window molding	●	●	●
Bright wheelip molding	●	●	●
Lower bodyside protection molding	●	●	●
Dual accent bodyside paint stripes	●	●	●
Unique Two-Tone paint	●	●	●
Swingdown tailgate with power window	●	●	●
Brushed aluminum tailgate applique	●	●	●
Sport wheel covers	●	●	●
Deluxe argent styled steel wheels	■	■	●
INTERIOR			
Front vinyl bucket seats	●	●	●
Front cloth and vinyl bucket seats	■	●	●
Front cloth Captain's Chairs	●	■	●
Rear flip/fold bench seat	●	●	●
Color-keyed door trim panels	●	●	●
Door trim panel cloth insert and map pocket	●	●	●
Color-keyed vinyl floor mat	●	●	●
Color-keyed carpeting	●	●	●
Color-keyed instrument panel with black appliques	●	●	●
Color-keyed instrument panel with woodtone appliques	●	●	●
Voltmeter, temperature and oil pressure gauges	●	●	●
Side window demisters	●	●	●
Electronic AM radio with digital clock(1)	●	●	●
Electronic AM/FM stereo radio with digital clock	■	●	●
Air conditioning	■	■	●
Interval wipers	●	●	●
Cigarette lighter	●	●	●
Inside hood release	●	●	●
Leather-wrapped steering wheel	●	●	●
Speed control/tilt steering wheel	■	●	●
Dual electric horns	●	●	●
Color-keyed safety belts with comfort regulator	●	●	●
Floor console	■	●	●
Front color-keyed cloth headliner	●	●	●
Color-keyed vinyl sun visors	●	●	●
Color-keyed cloth sun visors with LH retention band and RH visor mirror	●	●	●
Black rear quarter trim panels	●	●	●
Color-keyed rear quarter trim panels wit integral armrests and storage bin	●	●	●
Pivoting front vent windows	●	●	●
Dome light	●	●	●
Rear cargo light	●	●	●
Light Group(2)	■	■	●
Black spare tire cover (Chestnut with Eddie Bauer)	●	●	●

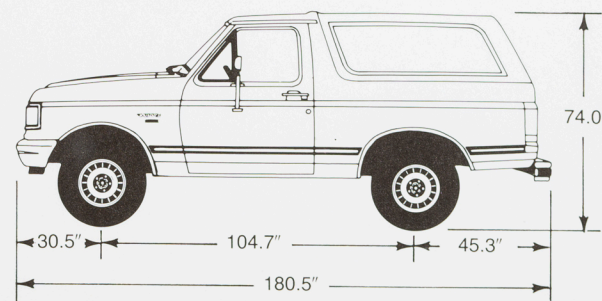
(1) May be deleted for credit. (2) See Options Availability, page 13 for content.

SPECIFICATIONS

Equipment	Standard	Optional
Axle, front rating	3,550 pounds	Limited slip
Axle, rear rating	3,800 pounds	Limited slip. See your Ford Dealer for available ratios
Brakes, front disc/rear drum	Power	—
Clutch, hydraulically actuated, self-adjusting	10-inch diameter	—
Electrical Battery, maintenance-free Alternator	72-amp/hr. 60-amp	84-amp/hr. —
Front hubs, free-running	Manual locking	Touch-Drive, auto-locking hubs
Fuel tank	32 gallon	—
Shock absorbers, gas-pressurized	heavy-duty front, rear	Handling Package, see pages 13 for contents
Springs, front	Computer selected coil	HD Front Suspension Package
Springs, rear	Computer selected single stage leaf	—
Stabilizer bar	Front	Handling Package
Steering	Power	—
Transfer case (part time)	2-speed	—
Transmission	5-speed manual overdrive	M50D-HD, automatic, automatic overdrive
Tires, P-metric, steel-belted radials	P235/75R15XL BSW (Custom, XLT) P235/75R15XL RWL all-terrain (Eddie Bauer)	See Options Availability, page 13.

DIMENSIONS

Angle of approach	36.4 degrees
Angle of departure	17.7 degrees
Ramp breakover angle	21.0 degrees
Ground clearance at transfer case	9.1"
Front tread	65.1"
Rear tread	64.4"
Wheelbase	104.7"
Front overhang	30.5"
Rear overhang	45.3"
Overall length	180.5"
Overall height	74.0"
Overall width	79.1"
Head room (front/rear)	41.1"/39.2"
Shoulder room (front/rear)	65.4"/64.2"
Leg room (front)	41.0"
Turning diameter (curb-to-curb)	36.5-ft.



FORD BRONCO PREFERRED EQUIPMENT PACKAGES

Preferred Equipment Packages are groups of popular options. By combining them into groups, we simplify the ordering procedure. Not only is ordering easy, but you can save money on the options included in the package you select. The price for the package is less than the price of the options if purchased separately.

All you do is: (1) decide on the trim level you want; (2) select the Preferred Equipment Package from the chart that includes the options you want.

For instance, if you decide on a Bronco XLT, you may have it equipped with any one of three Preferred Equip-

ment Packages. Package 682A is the standard XLT trim level. Package 683A and 684A add additional high-appeal options.

Be sure to ask your dealer about special discounts which are available with many Preferred Equipment Packages. They combine ease of ordering with real savings.

Should you wish to personalize your Bronco further, you may choose from the individual options listed on pages 12-13.

Package content is subject to change. For the latest information, consult your Ford Dealer.

	Preferred Equipment Packages					
	Custom		XLT			Eddie Bauer
Bronco 4WD	680A	681A	682A	683A	684A	686A
Minimum axle	•	•	•	•	•	•
Tires, minimum BSW	•	•	•	•	•	•
Custom trim (see page 7)	•	•	•	•	•	•
Privacy™ glass		•		•	•	•
Handling Package(1)		•			•	•
Light Group(2)		•			•	•
Speed control/tilt steering wheel		•	•	•	•	•
XLT trim (see page 6)			•	•	•	•
Air conditioning				•	•	•
Power door locks/windows				•	•	•
Tachometer				•	•	•
Cloth Captain's Chairs					•	•
P235/75Rx15XL RWL all-terrain tires					•	•
Electronic AM/FM stereo radio with cassette tape player and digital clock					•	•
Deluxe argent styled steel wheels					•	•
Eddie Bauer trim (see page 4)						•

(1) Includes rear stabilizer bar, quad front and heavy-duty rear shock absorbers (2) Includes glove box light, headlights "on" reminder buzzer, underhood light, dual beam dome/map light (standard dome light when optional front bench seat is ordered).

**Bronco XLT in Deep Shadow Blue Metallic/
Medium Silver Metallic.**

Some equipment
shown may be optional. See
options list on page 13.





FORD BRONCO FEATURES AND OPTIONS

In addition to Preferred Equipment Packages, Bronco offers a wide selection of individual options which allows you to tailor your vehicle even more to your particular needs.

Once you've chosen the series and Preferred Equipment Package you desire, find your Package number in the chart on page 13, then choose from the options listed under it.

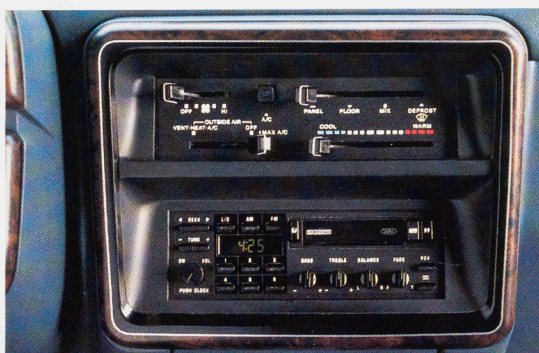
Options and their availability are subject to change. Your Ford Dealer can advise you of current status.



Speed control/Tilt steering wheel: Optional in Custom Bronco, standard in XLT and Eddie Bauer. Wheel tilts to five positions to suit your particular tastes. Makes entry and exit easy. Speed control includes a resume feature that allows you — while travelling — to return to a previously set speed.



Touch Drive Electric Shift controls allow you to shift into High Range on the fly.



Deluxe argent styled steel wheels.

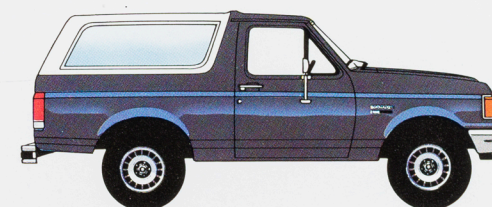
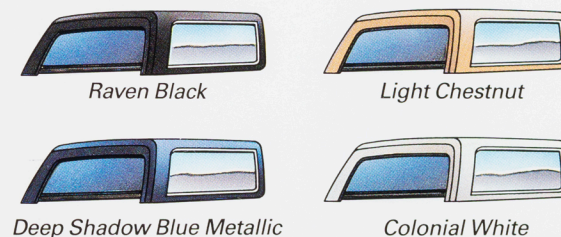


Electronic AM/FM stereo radio with cassette tape player features: digital clock; preset memory for six AM and 12 FM stations; seek tuning up or down the scale; manual tuning; Dolby® noise reduction; and front and rear fader controls.



Outside spare tire carrier.

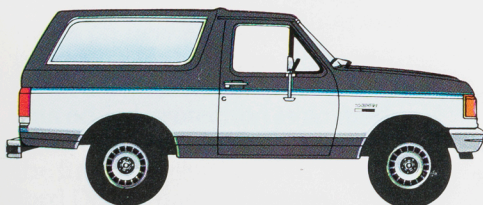
Bronco Roof Colors



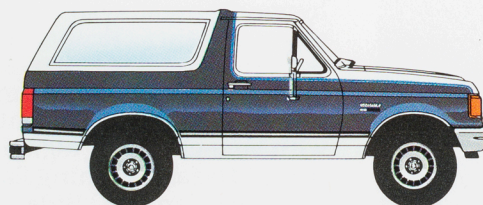
Two-Tone effect: Exterior color accented by rear fiberglass roof available in four different colors.

■ = Optional ● = Included in equipment packages or standard (see page 9 for additional standard features)						
Bronco 4WD	Custom		XLT		Eddie Bauer	
	680A*	681A	682A	683A	684A	686A
4.9L EFI with 5-speed manual OD	●	●	●	●	●	●
4.9L EFI with automatic(1)	■	■	■	■	■	■
4.9L EFI with 5-speed manual OD (HD)	■	■	■	■	■	■
5.0L EFI with automatic(1)	■	■	■	■	■	■
5.0L EFI with 5-speed manual OD(1)	■	■	■	■	■	●
5.0L EFI with AOD	■	■	■	■	■	■
5.8L EFI with automatic(1)	■	■	■	■	■	■
California Emissions Systems	■	■	■	■	■	■
High Altitude Emissions Systems	■	■	■	■	■	■
P235/75R15XL BSW all-terrain	■	■	■	■	■	■
P235/75R15XL RWL all-terrain	■	■	■	■	●	●
31x10.5R 15C RWL all-terrain	■	■	■	■	■	■
Heavy-duty maintenance-free battery (84 amps)	■	■	■	■	■	●
Super engine cooling	■	■	■	■	■	■
Handling Package(2)	■	●	■	■	●	●
Engine block heater	■	■	■	■	■	■
Heavy-duty Front Suspension(3)	■	■	■	■	■	■
Trailer Towing Package(4)	■	■	■	■	■	■
Limited slip rear axle	■	■	■	■	■	■
Limited slip front axle(6)	■	■	■	■	■	■
Automatic locking hubs	■	■	■	■	■	■
Touch-Drive electric shift	■	■	■	■	■	■
Privacy™ glass	■	●	■	●	●	●
Deluxe Two-Tone paint	■	■	■	■	■	■
Victoria Two-Tone paint	■	■	■	■	■	■
Deluxe argent styled steel wheels	■	■	■	■	●	●
Outside swingaway spare tire carrier	■	■	■	■	■	■
Cloth and vinyl bucket seats	■	■	■	■	■	■
Cloth and vinyl bench	■	■	■	■	■	■
Cloth Captain's Chairs	■	■	■	■	●	●
Air conditioning	■	■	■	●	●	●
Floor console	■	■	■	■	■	■
Rear window defroster	■	■	■	■	■	■
Light Group(5)	■	●	■	●	●	●
Power door locks and windows	■	■	■	■	■	■
Speed control/tilt steering wheel	■	■	■	■	■	■
Tachometer	■	■	■	■	■	■
Electronic AM/FM stereo seek radio with digital clock	■	■	■	■	■	■
Electronic AM/FM stereo seek radio with cassette tape player and digital clock	■	■	■	■	●	●
Radio credit option	■	■	■	■	■	■

*680A is the basic Custom Bronco trim level. See the model page 7 for content. (1) NA in California. (2) Includes rear stabilizer bar and quad front and heavy-duty rear shock absorbers. (3) Includes heavy-duty front axle (3800#), heavy-duty front springs (3800#), heavy-duty rear shock absorbers. (4) Includes trailer wiring harness, heavy-duty battery, super engine cooling, auxiliary transmission oil cooler, heavy-duty flasher, Handling Package. (5) Includes glove box light, headlights "on" reminder buzzer, underhood light, dual beam dome/map light (standard dome light with optional bench seat). (6) Requires L/S rear axle (N/A with 212 automatic locking hubs).



Deluxe Two-Tone: Includes accent color on center bodyside area and tailgate between the mid-bodyside tape stripe and the lower bodyside protection molding.



Victoria Two-Tone: Includes accent color on hood, upper fender, around door window, and on lower bodyside below the lower bodyside protection molding.

COLOR & TRIMS

Interior Colors				Exterior Colors
Medium Grey(1)	Regatta Blue	Scarlet Red	Chestnut	
X		X	X	Raven Black
X		X		Dark Grey Metallic
X	X	X		Medium Silver Metallic
X		X	X	Scarlet Red
X		X	X	Cabernet Red
Avail. with Eddie Bauer only			X	Alpine Green Metallic
	X			Bright Regatta Blue Metallic
X	X			Deep Shadow Blue Metallic
X	X	X	X	Colonial White
			X	Desert Tan Metallic
			X	Light Chestnut
			X	Dark Chestnut Metallic

(1) Available with XLT only.

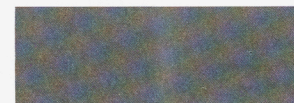
Some of these paint and trim colors are shown throughout the catalog. On the printed page colors are at best only representative of the original. Your Ford Dealer can show you actual samples of paint colors as well as interior trim samples.



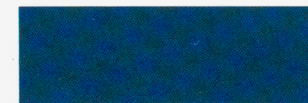
Raven Black



Bright Regatta Blue Metallic



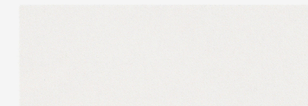
Dark Grey Metallic



Deep Shadow Blue Metallic



Medium Silver Metallic



Colonial White



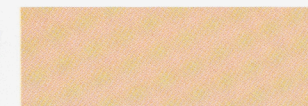
Scarlet Red



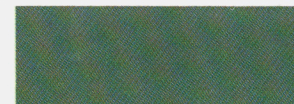
Desert Tan Metallic



Cabernet Red



Light Chestnut



Alpine Green Metallic
(available with Eddie Bauer only)

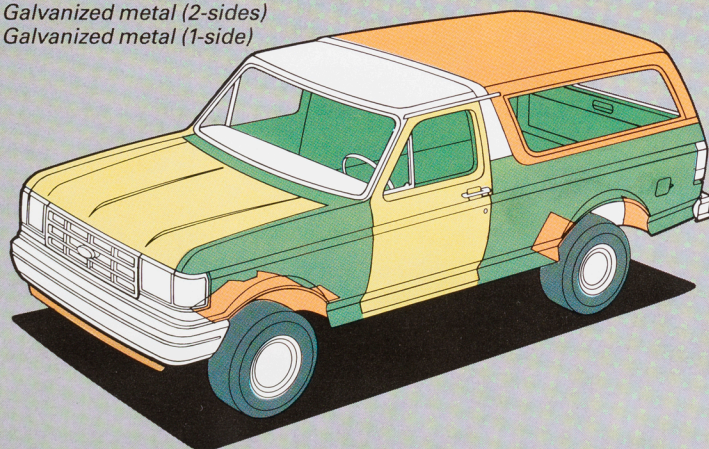


Dark Chestnut Metallic

SAFETY AND OWNER BENEFITS



- Plastic parts
- Galvanized metal (2-sides)
- Galvanized metal (1-side)



6-year/100,000-mile corrosion protection

Corrosion warranty coverage for body panel rust-through is 6 years or 100,000 miles, whichever comes first. See your Ford Dealer for details and a copy of this limited warranty.

Ford Motor Company strongly encourages all passengers to use their safety belts.

Ford urges the use of child and infant restraints. Ford's easy-to-install Tot-Guard (for children 20 to 50 pounds) and Infant Carrier (for children up to 20 pounds) are available at all Ford Dealers. If a child restraint requires a top-tether, Ford trucks provide for special anchorages.



The optional Tot-Guard is available at all Ford Dealerships.



Ford Lifeguard Design Safety Features

Vehicle operation

- Safety rim wheels and load-rated tires
- Split service hydraulic brake system with warning light
- Rear anti-lock braking system (ABS) in 2WD mode
- Corrosion-resistant brake lines
- Turn indicator with lane-changing signal feature
- Hazard warning flasher
- Backup lamps
- Side

marker/Parking lamps coupled with headlamps

- Variable speed windshield wipers
- Windshield washers
- Outside rearview mirrors
- Glare-reduced instrument panel, windshield wiper arms and windshield pillars
- Uniform transmission shift quadrant with safety starting switch (on all vehicles equipped with automatic transmissions)
- Continuously variable control illumination intensity (instrument panel lighting)
- Safety hood latch system
- Function-rated windshield defroster system

Occupant protection

- Safety-designed front end structure
- Two position safety door latches
- Integral lap and shoulder belts with automatic retractors for occupants of front seats
- Positive seat belt fastening reminder warning light and buzzer for the driver's seat
- Lap belts for center front and all rear seating positions
- Energy-absorbing steering column and steering wheel
- Energy-absorbing armrests and safety-designed door handles
- Energy-absorbing instrument panel with padding
- Energy-absorbing sun visors
- Safety glove box latch
- Inside yieldaway rearview mirror
- Impact-absorbing laminated safety glass windshield
- Flame-resistant interior materials
- Safety-designed radio control knobs and push buttons

6-year/60,000-mile powertrain warranty

Ford's powertrain warranty covers all 1988 cars and light trucks for 6 years or 60,000 miles, whichever comes first. This limited warranty covers major powertrain components. Certain restrictions and deductible apply. Ask your dealer for a copy.



Participating Ford Dealers are offering the Lifetime Service Guarantee, which guarantees their customer-paid work on your Ford vehicle for as long as you own it. This means that the covered repair is paid for once — and never again. If it ever has to be fixed again, the repairing dealer will fix it free. Free parts. Free labor. Even if the vehicle is kept a lifetime. It doesn't matter where it was purchased, or whether it was new or used; the work is still covered by the repairing dealer.

Ask to see the terms and conditions of this limited warranty when you visit your participating Ford Dealer.



Optional Ford Extended Service Plans cover major components on new Ford cars and trucks for longer than the vehicle's basic warranty. The cost of this added protection is so moderate that it could pay for itself the first time you need it. Your Ford Dealer has full details.



Ford Motor Credit Company is interested in helping to fill the transportation needs of every qualified buyer of a Ford product. A participating dealer can arrange financing terms or a Red Carpet Lease® tailored to your circumstance. Ford Credit has offices conveniently located throughout the United States.



QUALITY REPLACEMENT PARTS FROM FORD

Genuine Ford and Motorcraft original equipment replacement parts meet the same high standards as those installed in production.

Scheduled maintenance

Here are some examples of scheduled maintenance intervals for the 1988 Bronco. For complete maintenance recommendations, refer to the Maintenance Schedule Booklet.

Engine oil change	each 10,000 miles or 6 months
Spark plug change	each 30,000 miles
Air filter replacement	each 30,000 miles
Engine coolant replacement	each 30,000 miles or 3 years

Ford-paid repair programs after the warranty period

Sometimes Ford Motor Company offers adjustment programs to pay all or part of the cost of certain repairs. These programs are intended to assist owners and are in addition to the warranty or to required recalls.

Technical service bulletins

All vehicles need repairs during their lifetime. Sometimes Ford issues technical service bulletins (TSBs) and easy-to-read explanations describing unusual engine or transmission conditions which may lead to costly repairs, the recommended repairs, and new repair procedures. Often a repair now can prevent a more serious repair later.

For more information...

Ask Ford Motor Company or your Ford or Lincoln-Mercury dealer about Ford-paid repair programs and/or TSBs relating to your vehicle.

To get copies of materials for your vehicle or the vehicle of interest to you:
Call Ford toll-free at 1-800-241-3673. Alaska/Hawaii call 1-800-241-3711 and in Georgia call 1-800-282-0959.

Or write Ford at:

Ford Customer
Information System
Post Office Box 95427
Atlanta, Georgia 30347

We'll need your name and address; year, make, model and vehicle identification number, as well as engine size.

Options availability

Options shown or described in this catalog are available at extra cost and may be offered only in combination with other options or subject to additional ordering requirements or limitations.

Product changes

Ford Division reserves the right to change product specifications at any time without incurring obligations. It is important to note also that some of the items shown on vehicles in this publication are available through retail organizations and establishments not connected with Ford Motor Company. Availability, price, quality and durability of these items rest solely with the respective manufacturers and their sales organizations, and Ford assumes no responsibility for their use.

"Ask your Ford Dealer"

Following publication of this catalog, certain changes in standard equipment, options, prices and the like, or product delays, may have occurred which would not be included in these pages. Your Ford Dealer is your best source for up-to-date information.

Buy or lease a new Ford Bronco

B R O N C O

SAFETY

