

1 9 9 6



# BRONCO





# Go ahead, enjoy your day, in a full-size Ford Bronco.

Experience the power and versatility of the full-size sport utility in a Ford Bronco. It has lots of room and comfort, is V-8-powered, offers three 4x4 systems (standard auto-locking, optional manual-locking or Touch Drive electric shift), and comes equipped with a driver-

side air bag\* and 4-wheel

anti-lock brakes. And best of all, Bronco is *Built Ford Tough!*

\*Always properly wear your safety belts.

**Ford Trucks.**  
**The Best Never Rest.™**



▲ Bronco Eddie Bauer in two-tone Dark Toreador Red Clearcoat Metallic over Light Saddle Clearcoat Metallic. Some equipment shown may be optional.



# Lots of room and comfort in the tough Ford Bronco

No matter how rugged the going gets, on or off the road, Ford Bronco does its utmost to smooth out the bumps, with big features such as body-on-frame construction and heavy-duty gas-pressurized shock absorbers. Well-constructed, firmly designed seating, too. Bronco's versatility is also quite impressive, with flip/fold rear bench seat and plenty of cargo space for carrying all your gear.

For convenience as well as for security, a retractable cargo area cover with netting is available as an option with both the Bronco XLT and Eddie Bauer trim levels.



In the Bronco Eddie Bauer's overhead console are a compass, outside temperature display, map lights, garage door opener storage, and a storage pocket.

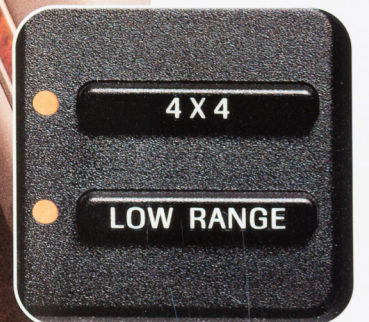


There are a lot of ways to personalize an Eddie Bauer, such as choosing an available premium electronic stereo system with compact disc player. Featured here is the handsomely appointed Ford Bronco Eddie Bauer interior in Medium Mocha. Some equipment shown is optional.

A remote keyless entry system is available for Bronco XLT and Eddie Bauer trim levels.



Along with superb driving comfort, you have peace of mind knowing that Bronco provides the added protection of a driver-side air bag. But remember that the air bag's effectiveness depends on your safety belts being properly worn at all times.



For the ultimate in 4-wheel driving convenience, choose the available Touch Drive electric shift transfer case with automatic-locking hubs.



## Big on style, convenience, performance



▲ V-8 power and body-on-frame provide great towing capability—6,600 lbs. with the 5.0L, 7,000 lbs. with the 5.8L, 4-speed automatic, and proper towing equipment. Above: Bronco XLT in Black Clearcoat. Some equipment shown is optional.



◀ The Bronco XLT interior in Opal Grey. Standard are full-length cloth headliner and carpeting, leather-wrapped steering wheel, and cloth captain's chairs with power lumbar support. Leather seating surfaces are available as an option.



# Features and specifications

## MAJOR BRONCO STANDARD FEATURES

### Exterior

- Aero-halogen headlamps
- Bumpers: chrome front (XL), chrome front with black rub strip (turbo style opening in XLT, Eddie Bauer); chrome rear step with 4000-lb. trailer tow rating
- Tinted glass all around
- Privacy glass and unique two-tone paint treatment (Eddie Bauer)
- Cab steps (Eddie Bauer)
- Mirrors, aero-styled manual: black (XL); bright (XLT, Eddie Bauer)
- Swing-down tailgate/power window
- Wheel trim: bright hub caps on argent steel wheels (XL); argent styled steel wheels (XLT); forged aluminum deep dish wheels (Eddie Bauer)

### Interior

- Driver-side air bag to supplement the safety belts
- Front seats: vinyl bucket (XL); cloth captain's chairs with power lumbar support (XLT, Eddie Bauer)
- Rear flip/fold bench seat
- Full-length color-keyed cloth headliner (half-length in XL)
- Tachometer (except XL); voltmeter, oil pressure and temperature gauges
- Power Point electrical accessory outlet
- Interval windshield wipers
- Electronic AM/FM radio/digital clock
- Speed control/tilt steering wheel (XLT, Eddie Bauer)
- Black leather-wrapped steering wheel (XLT, Eddie Bauer)
- Interior Enhancement/Light Group: headlamps-on audible alert, under-hood light, dual beam dome/map light, floor console (Eddie Bauer)
- Added Eddie Bauer features: CFC-free air conditioning; overhead console (compass, outside temperature display, map lights, garage door opener storage, and storage pocket); rear window defroster; illuminated visor mirrors with auxiliary visors; floor mats

### Functional

- 5.0L EFI V-8 engine with 5-speed manual overdrive transmission (electronic 4-speed automatic overdrive transmission in Eddie Bauer)
- Twin-Traction Beam independent front suspension with stabilizer bar
- Heavy-duty gas-pressurized shocks
- 4-wheel power anti-lock brakes
- 32-gallon fuel tank with skid plates
- Automatic front locking hubs; 2-speed transfer case with skid plate
- Five P235/75R15XL black sidewall all-season tires (see your Ford Dealer for optional all-season and all-terrain tire availability and usage)
- 2,450-lb. front springs; 3,770-lb. rear springs

## PREFERRED EQUIPMENT PACKAGES AND OPTIONS

P = Preferred Equipment Package feature S = Standard O = Optional

	XL 680A	XLT 684A	Eddie Bauer 686A
Climate Control Group:			
CFC-free air conditioning	P	P	S
Rear window defroster	P	P	S
Wheel Group:			
Outside, swing-away spare tire carrier	P	P	P
Argent styled steel wheels	P	S	—
Chrome styled steel wheels	—	P	—
Luxury Group:			
Privacy glass	—	P	S
Bright electric mirrors	—	P	P
Interior Enhancement/Light Group (1)	—	P	S
Power door locks/windows	—	S	S
Electronic AM/FM stereo radio with cassette player, digital clock	—	P	P
Exterior sport package (2)	—	O	—
Premium electronic AM/FM stereo radio with CD player, digital clock	—	O	O
Cloth and vinyl bench seat	O	O	—
Captain's chairs with leather seating surfaces (including power lumbar)	—	O	O
Remote keyless entry system	—	O	O
Light and convenience group (3)	—	O	S
Bright low-mount swing-away mirrors	O	O	—
Signal mirrors	—	O	O
Cargo cover/net	—	O	O
Deluxe two-tone paint	—	O	—
Argent styled steel wheels	P	S	—
Chrome styled steel wheels	—	P	—
Forged deep-dish aluminum wheels	—	O	S
P235/75R15XL OWL all-season tires	—	O	O
P235/75R15XL OWL all-terrain tires	O	O	O
P265/75R15SL OWL all-terrain tires	—	O	O
5.0L EFI V-8 with electronic 4-speed automatic overdrive transmission	O	O	S
5.8L EFI V-8 with electronic 4-speed automatic overdrive transmission	O	O	O
Heavy-duty battery	O	O	S
Manual locking hubs	O	O	—
Touch Drive 4x4 electric shift	—	O	O
Engine block heater	O	O	O
Trailer towing package (4)	O	O	O

(1) Headlamps-on audible alert, underhood light, dual beam dome/map light, and floor console. (2) Color-keyed grille, headlamp surround, front bumper with black rub strip, rear bumper and cab steps; black electric aero mirrors with enhanced signal mirror feature; forged aluminum deep dish wheels; lower bodyside moldings and tailgate appliqué deleted. (3) Electrochromic rearview mirror and illuminated visor mirrors with auxiliary visors. (4) Trailer wiring harness, heavy-duty turn signal flasher, rear stabilizer bar (front standard), quad front and heavy-duty rear shocks, heavy-duty battery — 84 amp-hr./850 CCA (std. with Eddie Bauer), and super engine cooling.

## ENGINE SPECIFICATIONS

### 5.0-liter multi-port EFI V-8

Bore and stroke	4.00x3.00
Compression ratio	9.0
Horsepower	199 @ 4,200 rpm
Torque, lbs./ft.	270 @ 2,400 rpm

### 5.8-liter multi-port EFI V-8

Bore and stroke	4.00x3.50
Compression ratio	8.8
Horsepower	205 @ 3,500 rpm
Torque, lbs./ft.	328 @ 2,200 rpm

## BRONCO MAXIMUM TRAILER WEIGHTS

	Axle Ratio	GCWR Max.	Bronco 4x4
Automatic			
5.0L EFI V-8	3.55	11,500	6,600
5.8L EFI V-8	3.55	12,000	7,000
Manual			
5.0L EFI V-8	3.55	7,800	3,000

Note: See your dealer for availability. Maximum trailer weights shown must be reduced by passenger and cargo weight in the towing vehicle. The combined weight of the towing vehicle (including passengers, hitch and cargo) and the loaded trailer must not exceed the Gross Combined Weight Rating (GCWR).

## PRODUCT CHANGES AND OPTIONS AVAILABILITY

Following publication of the catalog, certain changes in standard equipment, options, prices and the like, or product delays, may have occurred which would not be included in these pages. Your Ford Dealer is your best source for up-to-date information.

Ford Division reserves the right to change product specifications at any time without incurring obligations.

Options shown or described are available at extra cost and may be offered only in combination with other options or subject to additional ordering requirements or limitations.



## Colors and trims



Light Saddle Clearcoat Metallic



Pacific Green Clearcoat Metallic



Toreador Red Clearcoat Metallic



Light Willow Green Clearcoat Metallic



Dark Toreador Red Clearcoat Metallic



Moonlight Blue Clearcoat Metallic

### EXTERIOR PAINT COLORS

#### XL, XLT, and XLT Sport

	Royal Blue	Opal Grey	Medium Mocha
Light Saddle Clearcoat Metallic*			■
Bright Red Clearcoat†		■	
Toreador Red Clearcoat Metallic*		■	■
Dark Toreador Red Clearcoat Metallic*		■	■
Moonlight Blue Clearcoat Metallic*	■	■	
Portofino Blue Clearcoat Metallic*	■	■	
Pacific Green Clearcoat Metallic*		■	■
Light Willow Green Clearcoat Metallic*		■	■
Silver Frost Clearcoat Metallic*	■	■	
Oxford White Clearcoat	■		■
Black Clearcoat		■	■

#### Eddie Bauer Two-Tone‡

Dark Toreador Red Clearcoat Metallic			■
Moonlight Blue Clearcoat Metallic			■
Pacific Green Clearcoat Metallic			■
Oxford White Clearcoat			■
Black Clearcoat			■

\*XL and XLT only. †XLT Sport only. ‡With Light Saddle Clearcoat Metallic lower accent paint.



Bright Red Clearcoat (XLT Sport)



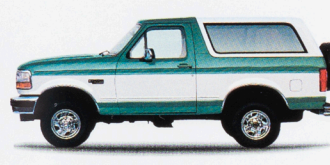
Portofino Blue Clearcoat Metallic



Silver Frost Clearcoat Metallic



Oxford White Clearcoat



Optional XLT deluxe two-tone paint

## Ownership experience

### ROADSIDE ASSISTANCE PROGRAM

Every new Ford includes the assurance of a no-cost, 24-hour emergency Roadside Assistance Program provided during the 3-year/36,000-mile bumper-to-bumper warranty. Ask your dealer for complete details on this program which includes such services as fuel delivery, tire change, or even help when you're locked out of your truck.



Ford Credit offers a wide variety of financing and leasing programs to qualified buyers which can be arranged right at the dealership. Ask your dealer for the facts on these programs.



Optional Ford Extended Service Plans go beyond the basic 3-year/36,000-mile warranty. Ask your dealer for complete details on the optional plans and for a copy of the limited warranty.

### DEALER-INSTALLED ACCESSORIES

Your dealer offers a variety of quality Ford-brand accessories that meet or exceed our strict specifications.





◀ Body-colored cab steps are included with the XLT Exterior Sport Package.



▲ Bronco XLT Sport in Bright Red Clearcoat. Monochrome paint treatment and cab steps are among XLT Sport's many features.

◀ With Bronco's new available signal mirrors, the left or right turn signal you select appears in the outside rearview mirror to alert approaching traffic.



▲ Available premium electronic AM/FM stereo radio with compact disc player and digital clock.



▲ Argent styled steel wheel, chrome styled steel wheel and forged aluminum deep dish wheel.





366 AHP Echo in U.S.A. 8/95

Printed on recycled paper  
10% post-consumer waste

